

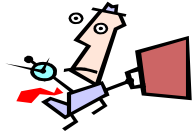
TechWare Incorporated

Total Laboratory Solutions

PO Box 1767
755 N. Main Street
Mooresville, NC 28115
Phone: 704-663-5550
Fax: 704-663-5455

email: sales@techwareinc.com

www.techwareinc.com



Less time!



More data!

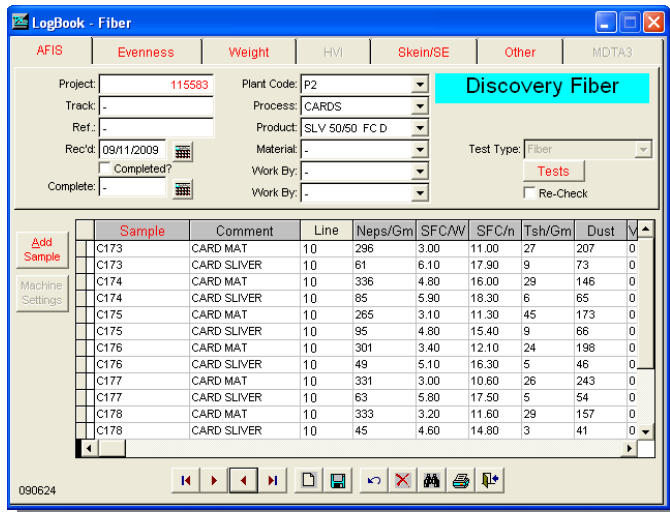


More to analyze!



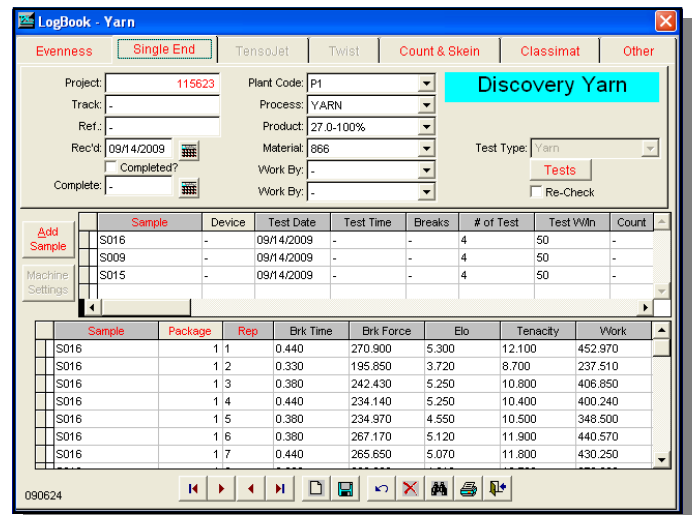
Less frustration!

LogBook Discovery

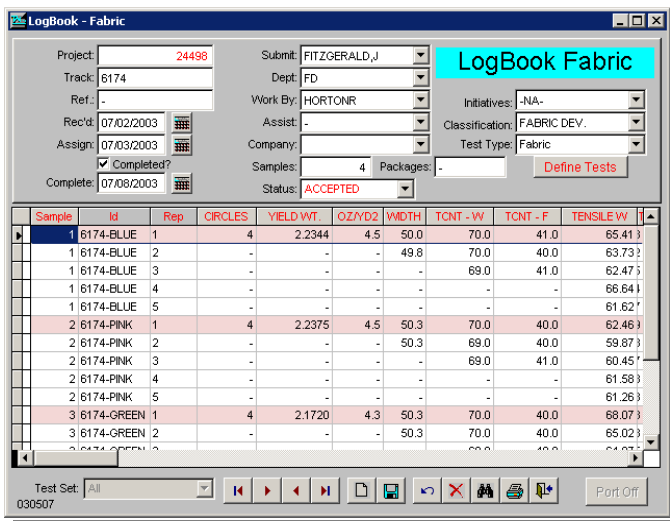


LogBook Discovery is an inclusive data management system for the yarn producer, as well as the vertical manufacturing environment. Automatic data collection allows production trend information to be reviewed quickly and efficiently. Extensive reporting and graphing tools give the user the ability to review large amounts of test data in a variety of methods. With our custom report writer, you can schedule reports and graphs automatically –Hands free! Give us a call today and we will be happy to show you our Solutions!

LogBook Discovery modules are able to automate fiber, yarn as well as fabric labs. *Discovery's* high powered modules can collect AFIS, Evenness, Single End and almost any electronic testing device automatically and have it readily available for easy reporting and trend analysis. All LogBook Reports and Graphs can be exported to a number of file formats. Multiple graphs (up to six) fit neatly for one page display.



Automation is an aggressive requirement in today's challenging business world. Testing Laboratories *must* automate in order to control, track and process the vast amount of information in a timely fashion! **Discovery** was created to give accurate, timely and comprehensive information needed to make critical Quality Control decisions. These decisions are essential in order to play a part in today's highly competitive markets. The easy to use features of **Discovery** provide the answers to all your laboratory data management needs.



Company Profile

TechWare Incorporated was established in 1991 developing software for the Textile Industry. Our core business was founded on a family of products known as LogBook. The LogBook product line features Automatic Data Collection, Statistical Process Controls (SPC) and Laboratory Data Management for every industry. The newest additions to the LogBook family are the **TechWare MainTrac (preventive maintenance)** and **TechWare LogBook Monitor (Visual SPC analysis)**. These additional products have allowed us to branch out into other industries such as Chemicals, Plastics and Glass offering the latest in Total Project Management.

TECHWARE INCORPORATED - Summary Report

Plant Code: P1 Product: 26.0-100%

Process: YARN

Project	Test Date	Machine	Count	CV %	SE Break	Break CV %	Avg. Elo. %	CvM	Thin (-50%)	Thick (+50%)	Neps	Hairness	Classification				Friction			Package Wt.		
													Total Faults	Obj. Faults	Neps	Thick EFG	Thin H11	Thin H22	Avg.		CV	Max
68694	09/02/02	S031	26.16	0.79	226	7.96	4.27	15.67	70	151	17	4.50	0	13	11	0	8	0	0.12	0.00	0.12	7.66
68713	09/03/02	S022	25.88	0.90	236	8.00	4.36						0	12	9	0	11	1	0.11	5.75		7.97
	09/03/02	S053	25.99	1.07	231	8.04	4.44	15.71	65	164	16	4.53	0	12	9	1	11	0	0.09	0.00	0.09	7.27
68786	09/05/02	S031			226	9.37	4.11	15.97	55	146	12	4.76										
68822	09/07/02	S023	25.76	1.03	229	9.35	4.50	15.60	69	165	18	4.62	0	17	14	2	7	0	0.12	0.00	0.12	7.47
	09/07/02	S026	25.90	1.16	230	9.26	4.28															
	09/07/02	S033	25.47	1.13	230	9.17	4.16	15.39														
	09/07/02	S057	25.54	0.54	227	13.75	4.27															
	09/07/02	S065	25.75	1.66	227	8.88	4.43	15.56														
68837	09/08/02	S033	25.50	0.43	231	8.62	4.15	15.44														
68858	09/08/02	S130						16.12														
68861	09/09/02	S002	25.64	0.43	221	8.41	4.03															
	09/09/02	S024	25.76	0.66	222	11.23	4.53															
	09/09/02	S033	25.64	0.32	235	7.64	4.43	15.53														
	09/09/02	S055	25.68	0.54	229	8.08	4.40	15.62														
	09/09/02	S065						15.05														
68915	09/12/02	S044	25.73	0.73	233	8.65	4.58															
	09/12/02	S056	25.80	1.11	237	7.69	4.59	15.42														
	09/12/02	S064	25.63	0.58	220	11.28	4.06															
	09/12/02	S066	25.73	0.93	238	8.20	4.37	15.41														
Average:			25.74	0.82	229	9.08	4.33	15.54														

Target:	26.00	-	230	3.50	14.80
Limit Min:	25.75	-	197	-	-
Max:	26.10	-	251	-	16.25

Date: 06/03/04

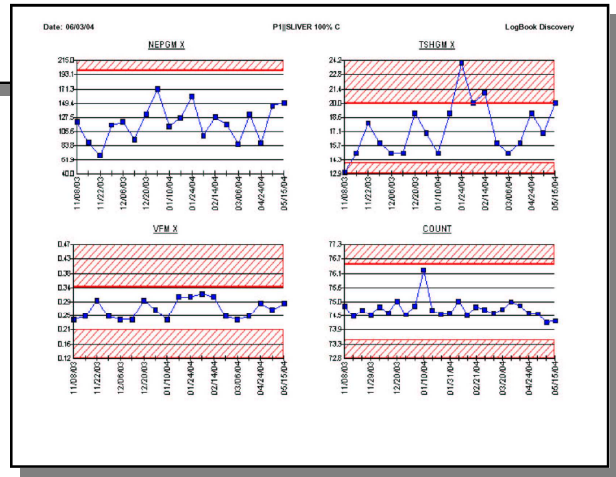
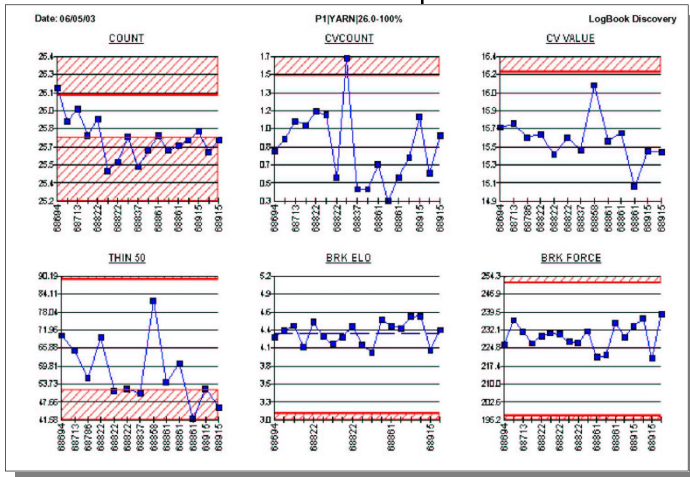
TECHWARE INC. Elimination Report (AFIS)

Page: 1

Plant Code: P1 Product: SILVER 100% C

Date	Machine	Process	Neps		SFC(w)		Dust		Trash		% VFM		LUCKER END	FLATS REVOL	CYUNDER WRE					
			Mat	Sliver	Elimination %	Mat	Sliver	Elimination %	Mat	Sliver	Elimination %	Mat				Sliver	Elimination %			
11/10/03	0017	CARDS	502	128	74.50	8.8	10.5	-19.31	315	118	62.53	49	15	69.38	1.36	0.22	83.82	11/04/03	09/24/02	/ /
11/10/03	0018	CARDS	537	113	78.95	9.7	10.1	-4.12	363	131	63.91	48	6	87.50	0.91	0.16	82.41	01/20/04	01/20/04	/ /
11/10/03	0019	CARDS	548	84	84.67	8.9	8.8		299	153	48.82	44	23	47.72	1.30	0.33	74.61	06/12/03	06/12/03	/ /
11/10/03	0020	CARDS	515	83	83.88	8.8	10.2	-15.90	333	136	58.15	54	15	72.22	1.13	0.24	78.76	04/06/04	04/06/04	/ /
11/10/03	0021	CARDS	571	43	92.46	8.5	10.3	-21.17	283	97	63.11	61	12	80.32	1.33	0.23	82.70	03/31/04	04/03/03	/ /
11/10/03	0022	CARDS	537	108	79.89	9.3	9.4	-1.07	227	80	64.75	44	13	70.45	0.80	0.17	75.75	09/02/04	03/12/03	/ /
11/10/03	0023	CARDS	564	96	84.75	9.8	9.2	6.12	272	136	50.00	45	18	69.00	0.97	0.34	64.94	02/05/04	02/12/03	/ /
11/10/03	0024	CARDS	513	69	86.54	9.3	9.9	-6.45	259	153	40.92	40	19	52.49	0.86	0.32	62.79	10/09/03	08/13/02	/ /
Line: 3 Average:			535	89	83.20	9.1	9.8	-7.60	291	125	56.65	48	15	67.51	1.08	0.25	76.10			

Target:	500	100	85.00	8.0	-8.00	300	100	75.00	55	15	75.00	1.50	0.20	80.00	
Limit Min:	-	-	59.00	-	-10.00	-	-	59.00	-	-	59.00	-	-	70.00	
Max:	600	150	-	10.0	11.0	-	450	125	-	60	23	-	1.00	0.40	-



Key Benefits

- Reduce labor costs by efficient data collection.
- Pin point and correct concerns before they become costly.
 - Centralized data.
- Data integrity by automatic collection from devices.
- Easy, unlimited access to data.

Other Tech Ware Systems

LogBook Solutions
LogBook Monitor (SPC)
MainTrac (preventive maintenance)
JSATrac (job safety analysis)

Recommended Hardware Requirements: Desktop PC, Pentium III or higher IBM PC-compatible computer w/250MB free hard drive space, 1GB RAM and Windows 9x, 2000 or XP. Laser or Ink Jet Printer.

Features

- Automatic data collection from most electronic devices.
- Define tests, modify reports and graphs to meet specific requirements.
- Options for PDF documents.
- Automatic report generation.
- Import data for easy analysis.
- Export data to other programs for additional use.
- Familiar, drop down lists and search elements throughout.